

# **Grand Chapter of Missouri**

## **Final Financial Report 2023 - 2024**

Russell S. Hanson, PGC, KGC  
Grand Treasurer

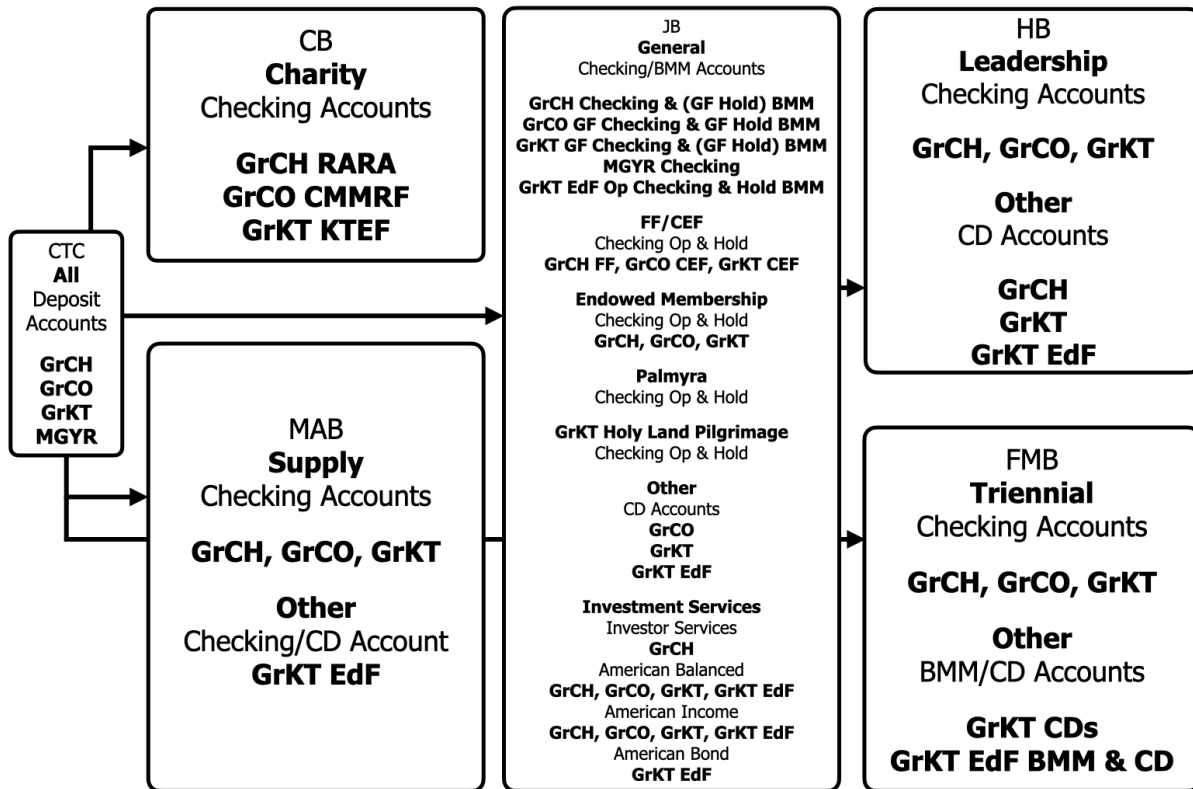


**FINAL REPORT OF THE GRAND TREASURER**

June 1, 2023 through May 31, 2024 - Corrected

**Financial Summary of the Grand Chapter**

Financial Plan of the Missouri Grand York Rite



**Status of Grand Chapter Liquid Accounts - May 31, 2024**

Commercial Trust Company (CTC)

MGYR Deposit Account = \$1,765.00

GrCH Deposit Account = \$100.00

Central Bank (CB)

GrCH RARA Charity Fund (CF) Account = \$4,601.80

Mid America Bank (MAB)

GrCH Supply Fund (SF) Account = \$9,980.99

## Jefferson Bank (JB)

MGYR Checking Account = \$545.12

GrCH General Fund (GF) Checking Account = \$40,560.61

GrCH Business Money Market (GF Hold) Account = \$75,369.78

GrCH Foundation Fund (FF) Op Checking Account = \$1,103.04

GrCH Foundation Fund (FF) Hold Checking Account = \$157,043.35

GrCH Endowed Membership Fund (EMF) Op Checking Account = \$3,698.00

GrCH Endowed Membership Fund (EMF) Hold Checking Account = \$29,337.60

GrCH Palmyra Fund (PF) Op Checking Account = \$1,620.88

GrCH Palmyra Fund (PF) Hold Checking Account = \$550.00

## Hawthorn Bank (HB)

GrCH Leadership Fund Checking Account = \$3,198.16

## First Mid Bank (FMB)

MGYR Savings Account = \$0.00

GrCH Triennial Fund Checking Account = \$2,055.28

Total of MGYR Liquid Assets = \$2,310.12

Sub Total of GrCH Liquid Assets = \$329,219.41

**Status of Grand Chapter Short-Term Accounts - May 31, 2024**

## Hawthorn Bank (HB)

GrCH HB CD 2 = \$23,898.90

Sub Total of GrCH Short-Term Assets = \$23,898.90

**Status of Grand Chapter Long-Term Accounts - May 31, 2024**

## Jefferson Bank (JB)

JB Investor Services - May 31, 2024

GrCH Putnam Mutual Fund = \$119,367.03

(Contains: GF = \$28,648.09, Special General Fund (SpGF) = \$71,620.22, &  
SF = \$19,098.72)

Capital Group 1 - June 30, 2024

GrCH American Balanced Mutual Fund = \$162,169.28

(Contains: SpGF = \$116,372.67 & EMF = \$45,796.61)

Capital Group 1 - June 30, 2024

GrCH Income Fund of America Mutual Fund = \$100,273.50

(Contains: EMF = \$90,065.66, PF = \$3,810.39, & SF = \$6,397.45)

Sub Total of GrCH Long-Term Assets = \$381,809.81

**Grand Total of all Grand Chapter Assets = \$734,928.12**

Fraternally Submitted,

REC Russell S. Hanson

Grand Treasurer

Grand Chapter of Missouri